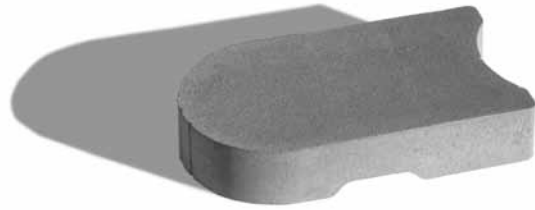


Tandem® Next Wall – Structural Starter Unit



NEW

Tandem® Next Wall - Structural Starter Unit



| | Dimensions (mm) | Dimensions (in) |
|-----------------|-------------------|--------------------------|
| | 90 x 268 x 469 | 3 9/16 x 10 1/2 x 18 1/2 |
| Weight/unit | 23 kg | 51 lb |
| Units/length | 2.30 units/lin. m | 0.70 units/lin. ft |
| Qty/cube | 56 units | 7 Rows |
| Weight/cube | 1333 kg | 2939 lb |

Colours

| Codes | Colours |
|----------|---------|
| 12053584 | Grey |

Can be double stacked

Typical row

